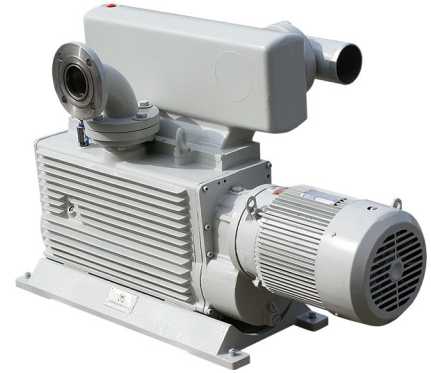


## INTRODUCING:

Precision Machined Pistons, Cams, Shafts and Gear Sets for Leybold Rotary Piston Pump Models DK200 and E250 to compliment our existing line of Seal and Gasket Kits.

**Contact Us:** +1 (716) 297-2039  
[info@precisionplus.com](mailto:info@precisionplus.com)

**Buy Online:** [www.precisionplus.com](http://www.precisionplus.com)



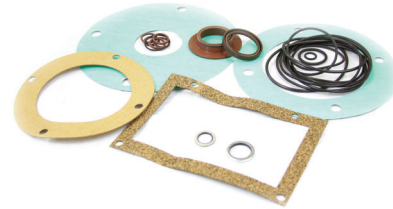
### Gasket Kits

Include O'rings, Gaskets and Sight Glass needed for light pump overhaul.

**Part Number:** 19243  
**MODELS:** E75

**Part Number:** 19253  
**MODELS:** E150, DK100

**Part Number:** 19263  
**MODELS:** E250, DK200



### Pistons

**Part Number:** 61607306  
**134x251x200mm**  
**MODELS:** DK100 & 200, E150 & 250

**Part Number:** 61606306  
**134x251x100mm**  
**MODELS:** DK100 & 200, E150 & 250



### Cams

**Part Number:** 61607415  
**110x200mm**  
**MODELS:** DK100 & 200, E150 & 250

**Part Number:** 61608415  
**110x100mm**  
**MODELS:** DK200 & E250



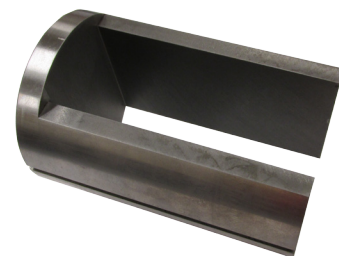
### Shaft

**Part Number:** 61608420  
**40x727mm**  
**MODELS:** DK200, E250

### Slide Valves

**Part Number:** 61607311  
**75x210mm**  
**MODELS:** DK100 & 200, E150 & 250

**Part Number:** 61606311  
**75x110mm**  
**MODELS:** DK100 & 200, E150 & 250



### Gear Set (60hz)

**Part Number:** 100000380  
**MODELS:** DK200, E250