

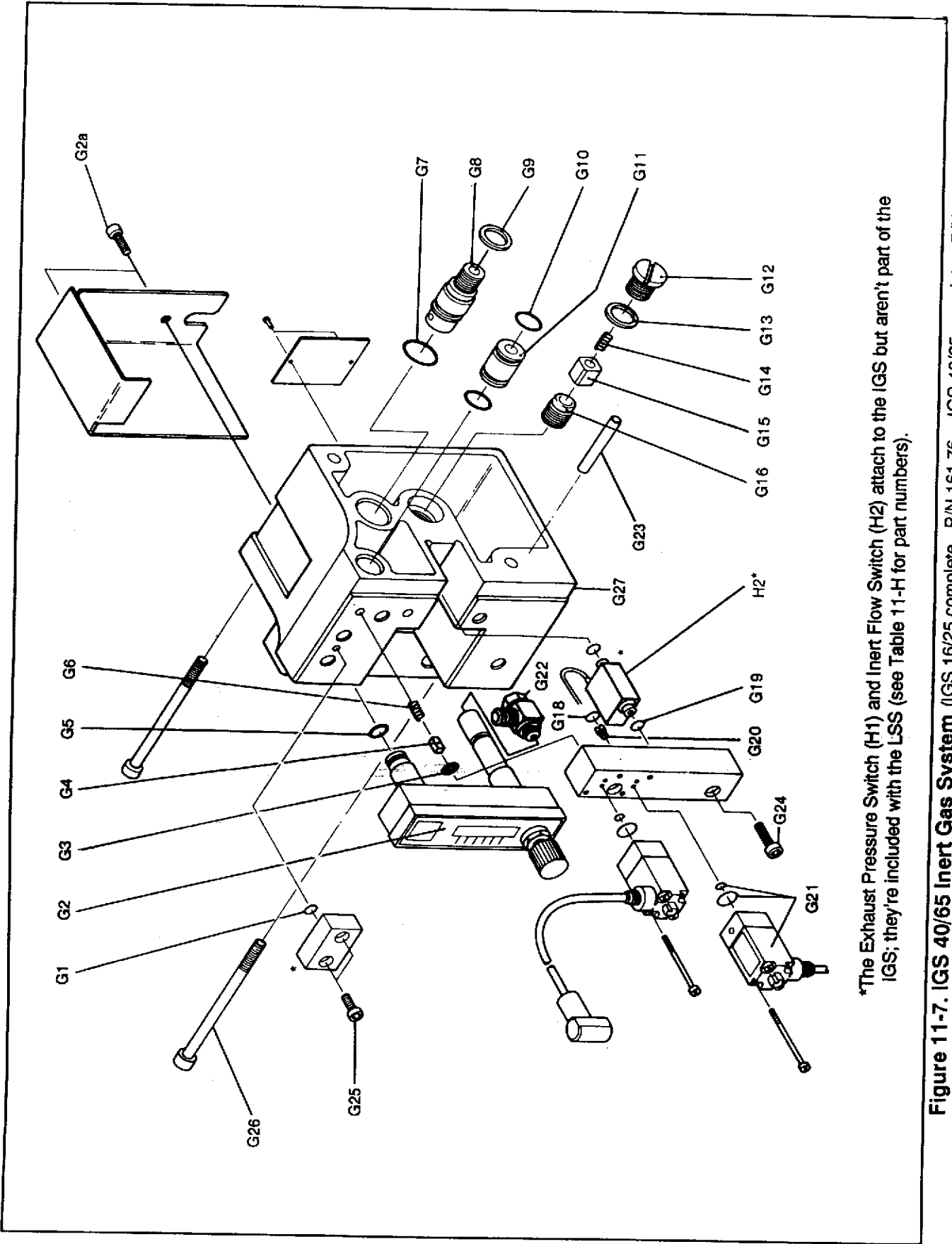
Figure 11-6. ARS 40/65 Exhaust Filter System (ARS 16/25 complete - P/N 189 56. ARS 40/65 complete - P/N 18957)

Table 11-F — Parts List for the ARS Exhaust Filter System (see Figure 11-6)

Item No.	Quantity		Description	Dimensions (mm)	Material	Part Number	Remarks
	16/25	40/65					
F1	1	1	Top housing	110 x 125 x 50	Aluminum	200 09 488	
			Top housing	140 x 156 x 50	Aluminum	200 09 908	
F2	4	4	Capscrew	M 6 x 30	DIN 912	201 03 259	
			Capscrew	M 8 x 25	DIN 912	201 03 121	
F3	2	2	O-ring	2.57 x 1.78	Viton	239 74 102‡	
F4	1	1	Exhaust pressure meter	0.8 bar		200 09 405	
F5	2	2	Tie rods	M4 x 125	Steel	200 09 086	
			Tie rods	M6 x 210	Steel	200 09 122	
F6	2	2	Nut	M4	DIN 934	211 01 107	
			Nut	M6	DIN 934	211 03 009	
F7	1	1	Bracket	60 x 96 x 3	Steel	200 09 091	
			Bracket	54 x 108 x 3	Steel	200 09 119	
F8	1	1	O-ring	52 x 3	Viton	239 70 261‡	
			O-ring	80 x 3	Viton	239 70 223‡	
F9	1	1	Inlet block	81.5 x 64 x 25	Cast Iron	200 09 307	
			Inlet block	D 109 x 35	Cast Iron	200 09 308	
F10	1	1	O-ring	45 x 3	Viton	239 70 304‡	
			O-ring	80 x 3	Viton	239 70 223	
F11	1	1	Pump's exhaust port	DN 25	Aluminum	193 01 618	
			Pump's exhaust port	DN 40	Aluminum	200 09 215	
F12	4	4	Capscrew	M6 x 40	DIN 912	201 03 107	
			Capscrew	M8 x 55	DIN 912	200 05 428	
F13	1	1	Oil-return line	6 x 1	Steel	200 09 577	Change both the oil-return line (F13) and the banjo fitting (F15); don't change one without changing the other. A complete oil-return assembly is also available; see below.
			Oil-return line	6 x 1	Steel	200 09 578	
F14	4	4	O-ring	12 x 1.5	Viton	239 70 108‡	
F15	2	2	Banjo fitting with O-rings (F14)			200 09 566	
F16	4	4	Capscrew	M 6 x 20	DIN 912	201 03 103	
F17	1	1	Cylinder pin	3 x 32	DIN 7	241 03 195	
F18	1	1	Flange, D 80 x 37	Cast Iron		363 75 124	
F19	1	1	Float seal	D 8 x 6	Viton	239 73 146‡	
F20	1	1	O-ring	50 x 3	Viton	239 70 211‡	
			Float	D 40 x 60		350 20 710	
F22	1	1	ARS lower housing		Aluminum	200 10 334	
			ARS lower housing		Aluminum	200 10 335	
F23	1	1	Plugscrew	M 16 x 1.5, DIN 908		201 27 105	
F24	1	1	Gasket ring	15.1 x 22 x 2	Viton	239 55 165‡	
F25	1	1	Washer	8.4	DIN 125	221 01 106	
F26	1	1	Nut	M8	DIN 934	211 01 314	
F27	1	1	Hex nut	M8 x 40	DIN 933	201 02 299	
			Hex nut	M8 x 55	DIN 933	200 25 831	
F28	2	2	Capscrew	M5 x 25		201 03 221	
F29	1	1	Coalescing exhaust filter	D 82 x 125		18972‡	
			Coalescing exhaust filter	D 55 x 210		18973*	
F30	1	1	Flat gasket	110 x 125 x 0.5	AFM	200 10 752‡	
			Flat gasket	140 x 156 x 0.5	AFM	200 10 751‡	
	1	1	Oil-return line, complete			200 09 581	Includes Items F13, F14, and F15.
			Oil-return line, complete			200 09 580	

* A stainless steel exhaust filter kit is also available for the ARS 40/65 under P/N 200-09-630; it consists of two stainless steel coalescing filters, two tie rods with nuts, and a mounting plate.

‡ Included in the ARS gasket set. The P/N of the ARS 16/25 gasket set is 720-24-014; the P/N of the ARS 40/65 gasket set is 720-24-015.



*The Exhaust Pressure Switch (H1) and Inert Flow Switch (H2) attach to the IGS but aren't part of the IGS; they're included with the LSS (see Table 11-H for part numbers).

Figure 11-7. IGS 40/65 Inert Gas System (IGS 16/25 complete - P/N 161 76. IGS 40/65 complete - P/N 161 77)

Table 11-G — Parts List for the Inert Gas System (see Figure 11-7)

Item No.	Quantity		Description	Dimensions (mm)	Material	Part Number	Remarks
	16/25	40/65					
G1*	1	1	O-ring	4.2 x 1.9	Viton	239 70 224‡	
G2	1	1	Metering valve	KSV6	Polysulfone	200 09 431	
G2a	2	2	Capscrew	M6 x 12, DIN 912		201 03 101	
G3*	1	1	Flat gasket	2.0 x 10.5 x 1.8	Viton	200 09 514‡	
G4	1	1	Check valve	5 x 8		200 09 513	
G5*	1	1	O-ring	9 x 2.5	Viton	239 70 103‡	
G6	1	1	Split spring	0.3 x 4.5 x 5.9		221 61 208	
G7*	1	1	O-ring	19 x 3	Viton	239 70 113‡	
G8	1	1	Adapter, gas ballast	D 24.6 x 41	Steel	200 09 446	
G9*	1	1	Gasket ring	15.1 x 22 x 1	Viton	239 55 165‡	
G10*	3	2	O-ring	6 x 2	Viton	239 70 412‡	
			O-ring	12.29 x 3.53	Viton	239 70 900‡	
G11	1	1	Adapter, oil-case purge	D 12 x 38	Steel	200 09 485	
			Adapter, oil-case purge	D 19.6 x 21	Steel	200 09 445	
G12*	1	1	Plugscrew	M 18 x 1.5, DIN 908		201 27 108	
G13*	1	1	Flat gasket	19 x 24	Viton	200 09 572‡	
G14	1	1	Split spring	0.8 x 5 x 17.5	Steel	221 61 234	
G15	1	1	Larger check valve	D 13 x 11.5	Steel	200 09 387	
G16*	1	1	Seal, check valve	D 16 x 12.5	Viton	348 61 029‡	
G18	1	1	O-ring	6 x 2	Viton	239 70 412	
G19	2	2	O-ring	6 x 2	Viton	239 70 412	
G20	1	1	Gas ballast orifice	D 0.7	Aluminum	200 09 418	
G21	2	2	Electromagnetic valve, 24V	M10 to 1/4" MNPT		200 09 391	
G22	1	1	Gas inlet Port Adapter		Carbon steel	725 58 004	The P/N of the adapter's gasket is 725 80 010‡.
G23	1	1	Dowel pin	D6 x 24, DIN 7979		200 09 487	
			Dowel pin	D8 x 40, DIN 7979		200 09 449	
G24	2	2	Cylinder screw	M 6 x 20, DIN 912		201 01 103	
G25	2	2	Cylinder screw	M5 x 12, DIN 912		201 03 216	
G26	2	2	Cylinder screw	M 6 x 85, DIN 912		201 03 113	
			Cylinder screw	M 8 x 85, DIN 912		200 09 453	
G27	1	1	Housing	110 x 75 x 58	Aluminum	200 09 465	
			Housing	114 x 120 x 108	Aluminum	200 09 437	

‡All the items in this table that are marked with a "‡" are included in the IGS gasket set (P/N 720-24-016).

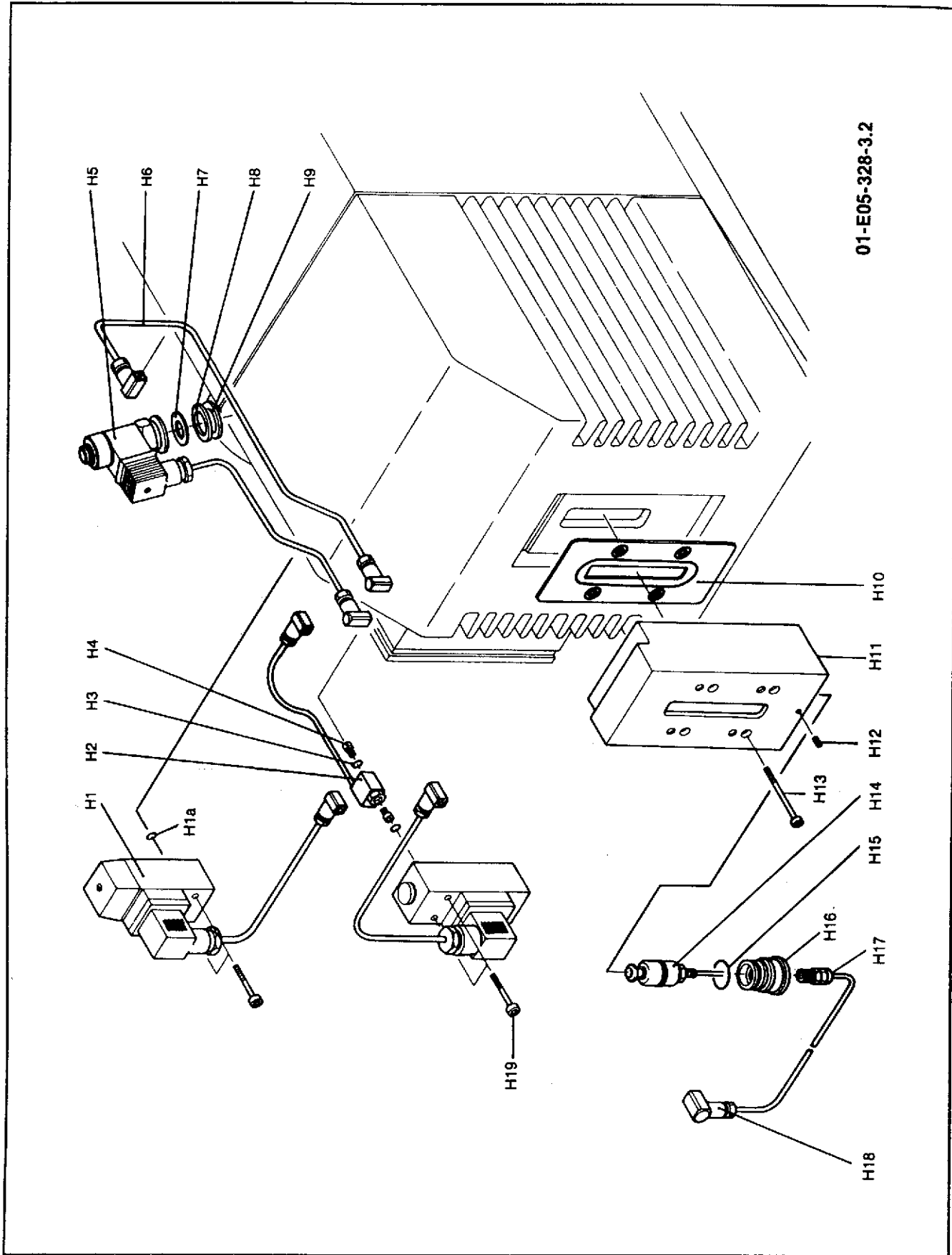


Figure 11-8. LSS 40/65 Limit Switch System (LSS 16/25 complete - P/N 161 06. LSS 40/65 complete - P/N 161 07)

Table 11-H — Parts List for the Limit Switch System (see Figure 11-8)

Item No.	Quantity		Description	Dimensions (mm)	Material	Part Number	Remarks
	16/25	40/65					
H1	2	2	Pressure switch (X1 & X4)	6 psig	24V; 6A	200 09 382*	Includes O-rings (H1a)
H1a	4	4	O-ring	4.2 x 1.9	Viton	239 70 224	Included with pressure switch (H1)
H2	1	1	INERT FLOW switch (X6)	120 l/hr switch	24V	200 09 383*	
H3	4	4	Flat gasket	6 x 9 x 2.3	Viton	200 09 880	
H4	2	2	Center tube	D 6 x 7	Steel	200 09 388	
H5	1	1	Differential oil pressure switch	(X3)	24 V	200 09 381*	58 or 32 psi depending on spring (see Section 7.8)
H6	1	1	Cable with plug	410 lg.		200 09 415*	
H7	1	1	Flat gasket	D 30 x 1	Viton	239 25 226‡	
H8	1	1	Ring	D 35 x 18.5 x 3	Steel	200 09 395	
H9	1	1	Flat gasket	25 x 35 x 3	Viton	239 72 112‡	
H10	1	1	O-ring	70 x 5	Viton	239 70 509‡	
		1	Flat gasket	63 x 149 x 0.5	AFM	200 10 747‡	
H11	1	1	Housing			200 09 490	
		1	Housing			200 09 441	
H12	1	1	Capscrew	M4 x 55, DIN 912		200 09 393	
		1	Setscrew	M4 x 8, DIN 915		030 02 504	
H13	2	4	Capscrew	M4 x 18, DIN 912		200 09 162	
		4	Capscrew	M4 x 55, DIN 912		200 09 393	
H14	1	1	Float switch (X8)	2 pol.	24V; 0.5A; 10 W	200 09 380*	
H15	1	1	O-ring	27 x 2.5	Viton	239 70 436‡	
		1	O-ring	22.2 x 3	Viton	239 70 410‡	
H16	1	1	Threaded bushing	35 x 48, 1.4301		200 09 491	
		1	Threaded bushing	35 x 24, 1.4301		200 09 442	
H17	1	1	Screw connection	PG 7		200 09 394	
H18	1	1	Plug-socket	4 pol.	50V; 6A	200 09 407	
H19	4	4	Capscrew	M 6 x 12, DIN 912		201 03 223	

‡All the items in this table that are marked with a "‡" are included in the LSS repair kit (P/N 720-24-017); the kit also includes the oil sight glass (B20).
 *The cable is part of the assembly and can't be purchased separately.

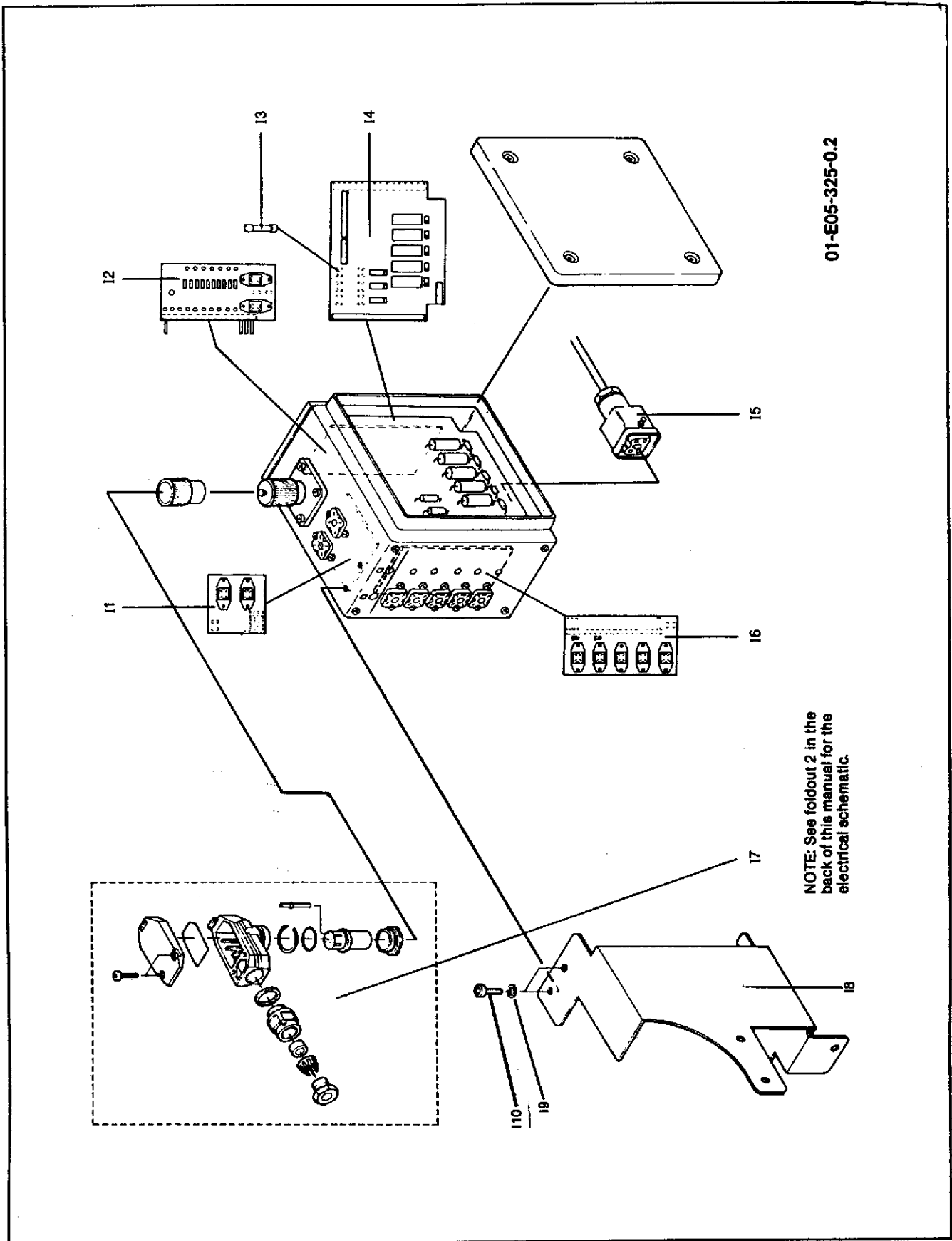


Figure 11-9. Electrical Indicator System (EIS 16/25 complete - P/N 160 96. EIS 40/65 complete - P/N 160 97)

Table 11-1 — Parts List for the Electrical Indicator System (see Figure 11-9)

Item No.	Quantity		Description	Dimensions (mm)	Material	Part Number	Remarks
	16/25	40/65					
11	1	1	P.C. board			200 80 018	
12	1	1	P.C. board			200 80 021	
13	3	3	Fuse	T0.2		520 25 318	
14	1	1	P.C. board			200 80 020	
15	1	1	Input plug			200 80 025	
16	1	1	P.C. board			200 80 019	
17*	1	1	Remote control plug			200 80 078	*Not included in standard equipment.
18	1		Bracket			200 09 496	
		1	Bracket			200 09 404	
19	7	8	Washer	6.4, DIN 433		221 03 112	
110	7	8	Capscrew	M6 x 12, DIN 912		201 03 101	