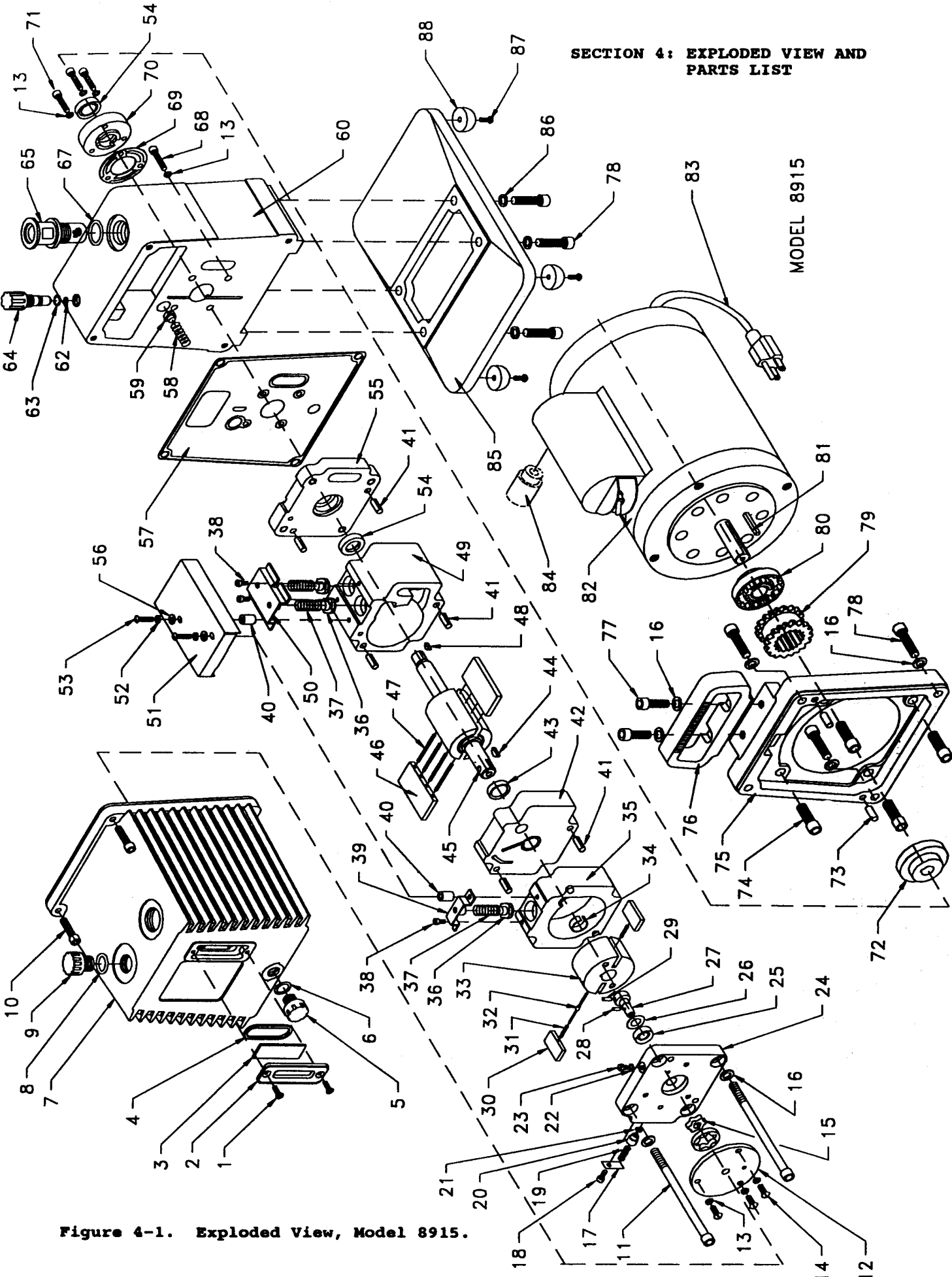


SECTION 4: EXPLODED VIEW AND PARTS LIST



MODEL 8915

Figure 4-1. Exploded View, Model 8915.

**PARTS LIST
MODEL 8915 VACUUM PUMP**

ITEM	QUAN	PC.NO.	DESCRIPTION	ITEM	QUAN	PC.NO.	DESCRIPTION
1	2	61-2232	Oil Window Cover	46	1	41-3479	Intake Vane
2	1	61-2228A	Oil Window Glass	47	4	41-2996	Vane Spring
3	1	61-2229A	Tetraseal, Viton #127	48	1	41-2732	Woodruff Key #403
4	1	61-2231	Drain Plug	49	1	61-9386C	Intake Ring
5	1	41-3477	O-ring, Viton #111	50	1	61-9393A	Intake Valve Bracket
6	1	41-7320	Oil Case	51	1	61-9420B	Baffle Cover
7	1	61-9367D	O-ring, Viton #115	52	2	2-69-6108	Lock Washer #8
8	1	61-2130A	Filler Plug	53	2	2-10-5612	Rd Hd Screw SS 8-32x3/4
9	1	61-1251A	Soc Hd Screw 1/4-20x1	54	2	41-2988	Lip Seal 5/8
10	4	2-01-6116	Soc Hd Screw 5/16-18x5	55	1	61-2235B	Wear Plate
11	4	62-0011	Cover Plate	56	2	2-68-5632	Washer, SS #8
12	1	61-9370A	Lock Washer, Split, #10	57	1	61-9224B	Pump Gasket
13	10	2-62-0793	Rd Hd Screw 10-32x1/2	58	1	61-2204A	Gas Ballast Spring
14	3	2-20-5708	Gerotor Pair	59	1	61-2118A	Valve
15	1	41-3036	Washer	60	1	61-9264D	Mounting Plate
16	10	41-2363	Spring Retainer	62	1	61-2157A	O-ring Viton #007
17	1	41-2784	Oil Plunger Spring	63	1	61-9282A	O-ring Viton #011
18	1	2-00-2606	Oil Feed Plunger	64	1	61-9279A	Gas Ballast Valve Assy
19	1	61-9388A	O-ring, Viton #005	65	1	61-9099A	Intake Adapter NW 25 Assy.
20	1	61-9256A	Fiber Gasket	67	1	61-9284A	O-ring Viton #214
21	1	41-2963	Orifice	68	4	2-00-6716	Soc Hd Scr 10-32x1
22	1	41-3175	End Plate	69	1	41-0643	Seal Gasket
23	1	61-1178A	Lip Seal 3/8	70	1	41-3697	Shaft Seal Housing
24	1	61-9369C	Thrust Washer	71	3	2-00-6814	Soc Hd Ser 10-32x7/8
25	1	41-2962	Shaft Extension	72	1	41-3071	Flange Coupling 1/2 Bore
26	1	41-2678	Drive Pin	73	2	4-21-6014	Dowel Pin 1/4x7/8
27	1	41-3056	Dowel Pin	74	4	2-01-6516	Soc Hd Screw 3/8-16x1
28	1	41-3058	Exhaust Vane	75	1	61-9123D	Motor Adapter Plate
29	1	4-21-3006	Exhaust Vane Spring	76	1	61-9121A	Handle
30	2	41-3327	Spring Holder	77	2	2-01-6316	Soc Hd Screw 5/16-18x1
31	2	41-2972	Exhaust Rotor	78	8	2-01-6320	Soc Hd Screw 5/16-18x1-1/4
32	1	41-2969	Tolerance Ring	79	1	41-3073	Coupling Sleeve
33	1	41-2964	Exhaust Ring	80	1	41-3072	Flange Coupling, 5/8 Bore
34	1	41-3061	Valve	81	1	41-2637	Motor Shaft Key
35	1	61-9404B	Valve Spring	82	1	61-9391A	Motor, 1/2 HP
36	3	61-9385A	Exhaust Valve Bracket	83	1	41-2982	Cord Set
37	3	2-00-2604	Spacer	84	1	41-3470	Cord Strain Relief
38	3	61-9394A	Dowel Pin 1/4	85	1	61-9222D	Pump Base
39	1	61-9419A	Center Plate	86	4	2-63-0356	Split Lock Washer 5/16
40	2	61-9280A	Lip Seal, 5/8	87	4	2-10-5607	Rd Hd Screw 8-32x7/16
41	6	61-9291B	Woodruff Key	88	4	61-9334A	Rubber Bumper
42	1	41-2977	Rotor	**	1	AC51000NW025	Adapter Hose NW25
43	1	41-0613		**	1	AC51100NW025	Hinged Clamp NW25
44	1	41-2993A		**	1	AC51200NW025	Centering Ring Assy NW25

** Parts supplied with the Pump but not shown

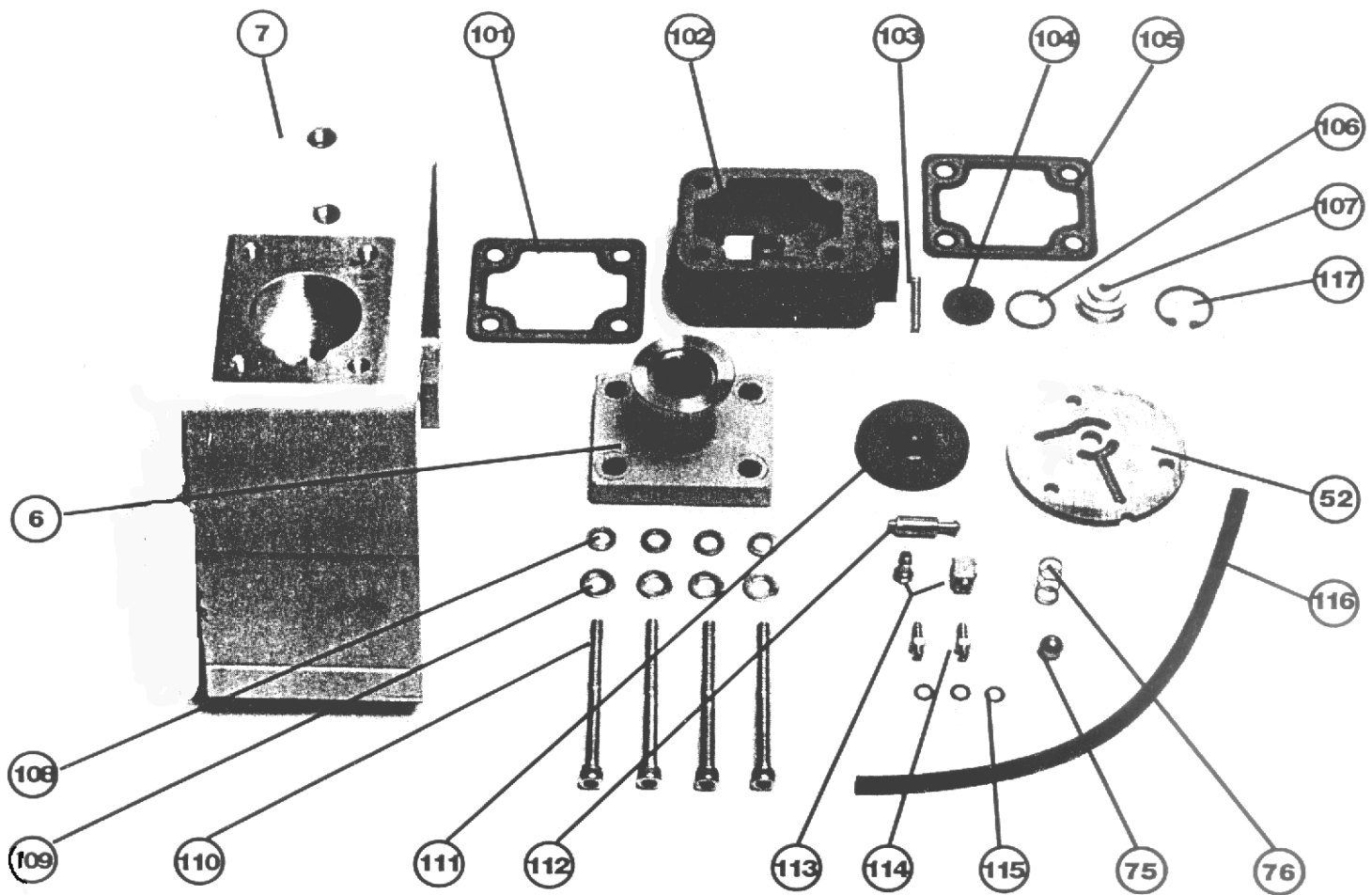


Figure 4-2. Exploded View for Isolation Valve, Models 8915A-55, 8915E-55

Table 4-2. Parts List for Isolation Valve, Models 8915A-55, 8915E-55

Item	Qty.	Part No.	Description
7	1	61-9124D	Mounting Plate
101	1	41-2241	Cover Gasket
102	1	41-3401	Isolation Valve Body
103	1	41-3403	Spring
104	1	41-3404	Diaphragm
105	1	41-3410	Isolation Gasket
106	1	61-9285A	O-ring, #017
107	1	41-3411	End Plug
108	4	2-63-0193	Split Lock Washer, 1/4
109	4	2-61-0000	Flat Washer, 1/4
110	4	2-01-6144	Socket Head Screw, 1/4-20x2-3/4
111	1	41-3402	Poppet
112	1	41-3405	Plunger
113	1	41-3174	Adjustable Elbow Fitting
114	2	41-3173	Hose Fitting
115	3	41-3175	Fiber Washer
116	1	41-3414	Viton® Tube
117	1	41-3407	Retaining Ring
*	2	41-3176	Hose Clamp

* Not Shown