
Roots 602 spare parts

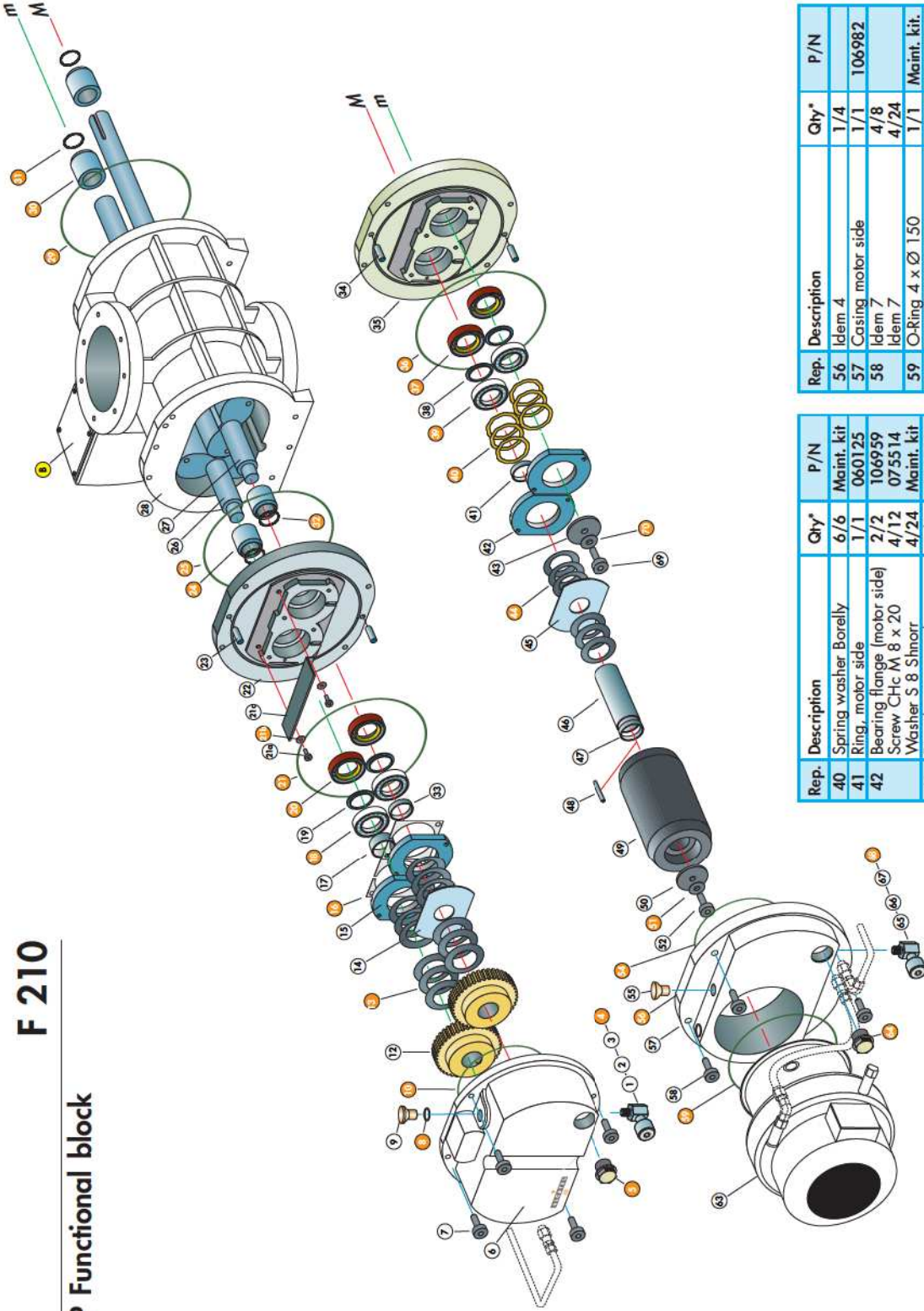
Presentation of Roots components

Roots 602 P functional block	F 210
Roots 602 L functional block	F 211
Roots 602 P/L - By-pass components	F 220
Roots 602 L - Casing pumping kit	F 230



F 210

ROOTS 602 P Functional block



Rep.	Description	Qty*	P/N
1	Adaptor	1/2	A329169
2	Drain pipe	1/2	100046
3	Plug connector B 1/2	1/4	076791
4	O-Ring 2.7 x Ø 18.4	1/4	Maint. kit
5	Level oil sight glass	1/2	Maint. kit
6	Gearbox casing	1/1	106910
7	Screw CHc M 8 x 45	4/8	074061
8	Washer S 8 Shnorr	4/24	Maint. kit
9	Idem 4	1/4	Maint. kit
10	Idem 3	1/4	Maint. kit
11	O-Ring 3 x Ø 194	1/2	Maint. kit
12	Set of gears	1/1	058961
13	Washer Shnorr «K»	12/18	Maint. kit
14	Lubrication disc	1/2	058963
15	Bearing flange (gear side)	2/2	106960
16	Screw CHc M 8 x 20	4/12	075514
17	Washer S 8 Shnorr	4/24	Maint. kit
18	Strip-off shim	10/10	Maint. kit
19	Upper ring, pinion side	1/1	051934
20	Ball bearing	2/4	Maint. kit
21	Deflector	2/4	051980
22	Lip seals	2/4	Maint. kit
23	O-Ring 3 x Ø 218	1/4	Maint. kit
24a	Screw CHc M 4 x 10	2/2	084093
24b	Washer Ondulflex M 4	2/2	Maint. kit
24c	Deflector	1/1	106936
25	Flange gear side	1/1	106909
26	Screw CHc M 8 x 20	2/12	075514
27	Washer S 8 Shnorr	2/24	Maint. kit
28	Centering pin Ø 8 x 37	2/4	060268
29	Friction ring	2/4	Maint. kit
30	Idem 21	1/4	Maint. kit
31	Driven piston (RSV 602)	1/1	060102
32	Driving piston (RSV 602)	1/1	060128
33	Stator without By-Pass (RSV 602)	1/1	106912
34	Stator with By-Pass (RSV 602)	1/1	106913
35	Lifting ring	2/2	076192
36	Nut	2/2	Maint. kit
37	Idem 21	1/4	Maint. kit
38	Idem 24	2/4	Maint. kit
39	O-Ring 2 x Ø 30	2/4	Maint. kit
40	Idem 31	2/4	Maint. kit
41	Lower ring, pinion side	1/1	051933
42	Idem 23	2/4	Maint. kit
43	Flange motor side	1/1	106908
44	Screw CHc M 8 x 20	2/12	075514
45	Washer S 8 Shnorr	2/24	Maint. kit
46	Idem 21	1/4	Maint. kit
47	Idem 20	2/4	Maint. kit
48	Idem 19	2/4	Maint. kit
49	Idem 18	2/4	Maint. kit

Rep.	Description	Qty*	P/N
40	Spring washer Borelly	6/6	Maint. kit
41	Ring, motor side	1/1	060125
42	Bearing flange (motor side)	2/2	106959
43	Screw CHc M 8 x 20	4/12	075514
44	Washer S 8 Shnorr	4/24	Maint. kit
45	Front bearing, washer	1/1	051988
46	Idem 13	6/18	Maint. kit
47	Idem 14	1/2	Maint. kit
48	Motor spacer	1/1	051984
49	Ring	1/1	100311
50	Needle	1/1	071053
51	Included in item 63		
52	Motor rotor washer	1/1	051989
53	Washer Ondulflex M10	1/2	Maint. kit
54	Screw CHc M 10x30 (RSV 601/602)	1/2	075548
55	Idem 10	1/2	Maint. kit
56	Idem 3	1/4	Maint. kit

Rep.	Description	Qty*	P/N
56	Idem 4	1/4	Maint. kit
57	Casing, motor side	1/1	106982
58	Idem 7	4/8	Maint. kit
59	O-Ring 4 x Ø 150	4/24	Maint. kit
60	Motor	1/1	Maint. kit
61	Screw CHc M 8 x 25	1/1	108117
62	Washer S 8 Shnorr	1/1	082736
63	Idem 5	1/2	Maint. kit
64	Idem 1	1/2	Maint. kit
65	Idem 2	1/2	Maint. kit
66	Idem 3	1/4	Maint. kit
67	Idem 4	1/4	Maint. kit
68	Idem 5	1/4	Maint. kit
69	Idem 52	1/2	Maint. kit
70	Idem 51	1/2	Maint. kit
B	see F 220		

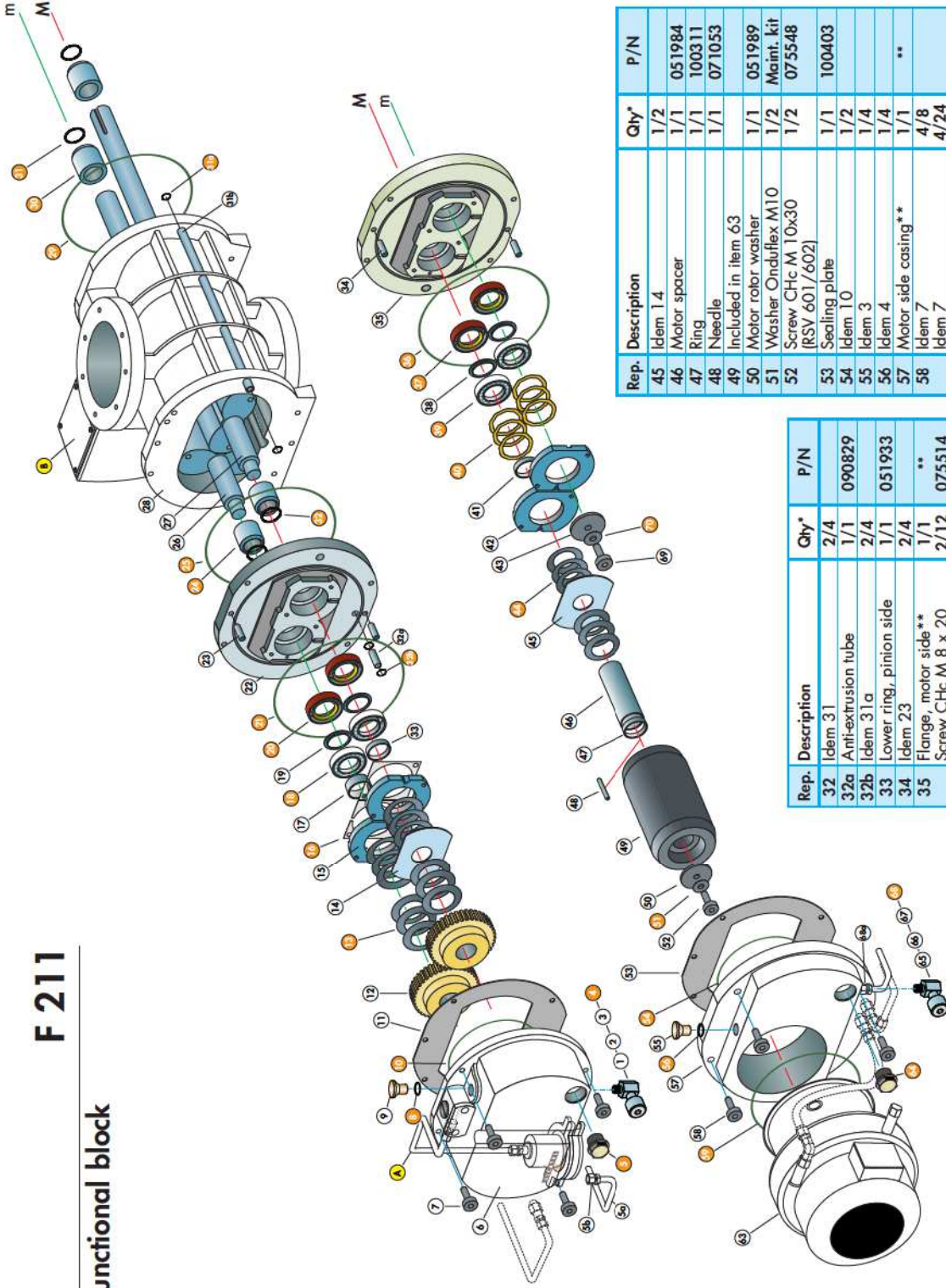
* Quantity / Total Quantity

- Cooling circuit parts (see F 510)
- Parts included in the maintenance kit
 - DRIVING shaft (D)
 - Driven shaft (d)



F 211

ROOTS 602 L Functional block



Rep.	Description	Qty*	P/N
1	Adaptor	1/2	A329169
2	Drain pipe	1/2	100046
3	Plug connector B 1/2	1/4	076791
4	O-Ring 2.7 x Ø 18.4	1/4	Maint. kit
5	Level oil sight glass	1/2	Maint. kit
5a	Oil tube	1/2	100317
5b	Union connector	1/2	081416
6	Gearbox casing	1/1	061818
	Stud	1/1	061819
	Deflector	1/1	071216
	Nut	1/1	071216
7	Screw CHc M 8 x 45	4/8	074061
	Washer S 8 Shnorr	4/24	Maint. kit
8	Idem 4	1/4	
9	Idem 3	1/4	
10	O-ring 3 x Ø 194	1/2	Maint. kit
11	Sealing plate	1/1	090826
12	Set of gears	1/1	058961
13	Washer Shnorr «K»	12/18	Maint. kit
14	Lubrication disc	1/2	058963
15	Bearing flange (gear side)	2/2	051981
	Screw CHc M 8 x 20	4/12	075514
	Washer S 8 Shnorr	4/24	Maint. kit
16	Strip-off shim	10/10	Maint. kit
17	Upper ring, pinion side	1/1	051934
18	Ball bearing	2/4	Maint. kit
19	Deflector	2/4	051980
20	Lip seals	2/4	Maint. kit
21	O-ring 3 x Ø 218	1/4	Maint. kit
21a	Screw CHc M 4 x 10	2/2	084093
21b	Washer Ondulflex M 4	2/2	Maint. kit
21c	Deflector	1/1	106936
22	Flange gear side**	1/1	**
	Screw CHc M 8 x 20	2/12	075514
	Washer S 8 Shnorr	2/24	Maint. kit
	Plug connector D1/8	2/2	081422
23	Centering pin Ø 8 x 37	2/4	060268
24	Friction ring	2/4	Maint. kit
25	Idem 21	1/4	
26	Driven piston (RSV 602)	1/1	060102
27	Driving piston (RSV 602)	1/1	060128
28	Stator without By-Pass (RSV 602)	1/1	1069125
	Stator with By-Pass (RSV 602)	1/1	1069135
	Lifting ring	2/2	076192
29	Idem 21	2/2	
30	Idem 24	1/4	
31	O-ring 2 x Ø 30	2/4	Maint. kit
31a	O-ring 2.2 x Ø 9.75	2/4	Maint. kit
31b	Casing connection tube (RSV 601/602)	1/1	100313

— Cooling circuit parts (see F 510)

● Parts included in the maintenance kit

— DRIVING shaft (D)

— Driven shaft (d)

* Quantity / Total Quantity

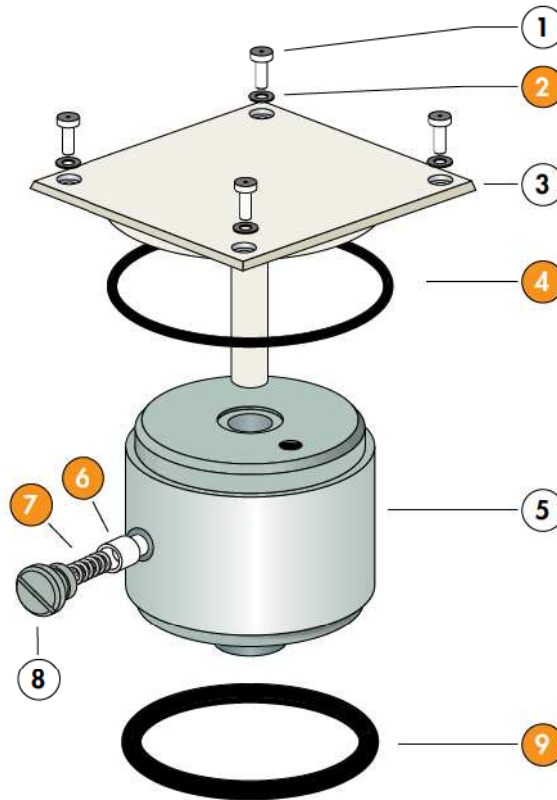
** Maintenance part not available. Can be replaced by Roots 602 P same parts (consult us).

Rep.	Description	Qty*	P/N
45	Idem 14	1/2	
46	Motor spacer	1/1	051984
47	Ring	1/1	100311
48	Needle	1/1	071053
49	Included in item 63		
50	Motor rotor washer	1/1	051989
51	Washer Ondulflex M10	1/2	Maint. kit
52	Screw CHc M 10x30 (RSV 601/602)	1/2	075548
53	Sealing plate	1/1	100403
54	Idem 10	1/2	
55	Idem 3	1/4	
56	Idem 4	1/4	
57	Motor side casing**	1/1	**
58	Idem 7	4/8	
59	O-ring 4 x Ø 150	4/24	
63	Motor	1/1	Maint. kit
	Screw CHc M 8 x 25		1081175
	Washer S 8 Shnorr		082736
64	Idem 5	1/2	Maint. kit
65	Idem 1	1/2	
66	Idem 2	1/2	
67	Idem 3	1/4	
68	Idem 4	1/4	
68a	Idem 5b	1/2	
69	Idem 52	1/2	
70	Idem 51	1/2	
A/B	see next sheets		

Rep.	Description	Qty*	P/N
32	Idem 31	2/4	
32a	Anti-extrusion tube	1/1	090829
32b	Idem 31a	2/4	
33	Lower ring, pinion side	1/1	051933
34	Idem 23	2/4	
35	Flange, motor side**	1/1	**
	Screw CHc M 8 x 20	2/12	075514
	Washer S 8 Shnorr	2/24	Maint. kit
36	Idem 21	1/4	
37	Idem 20	2/4	
38	Idem 19	2/4	
39	Idem 18	2/4	
40	Spring washer Borelly	6/6	Maint. kit
41	Ring, motor side	1/1	060125
42	Bearing flange, motor side	2/2	051982
	Screw CHc M 8 x 20	4/12	075514
	(RSV 301/602)		
43	Front bearing washer	4/24	Maint. kit
44	Idem 13	1/1	051988
		6/18	

Roots 602 P/L - By-pass components

B By-pass components

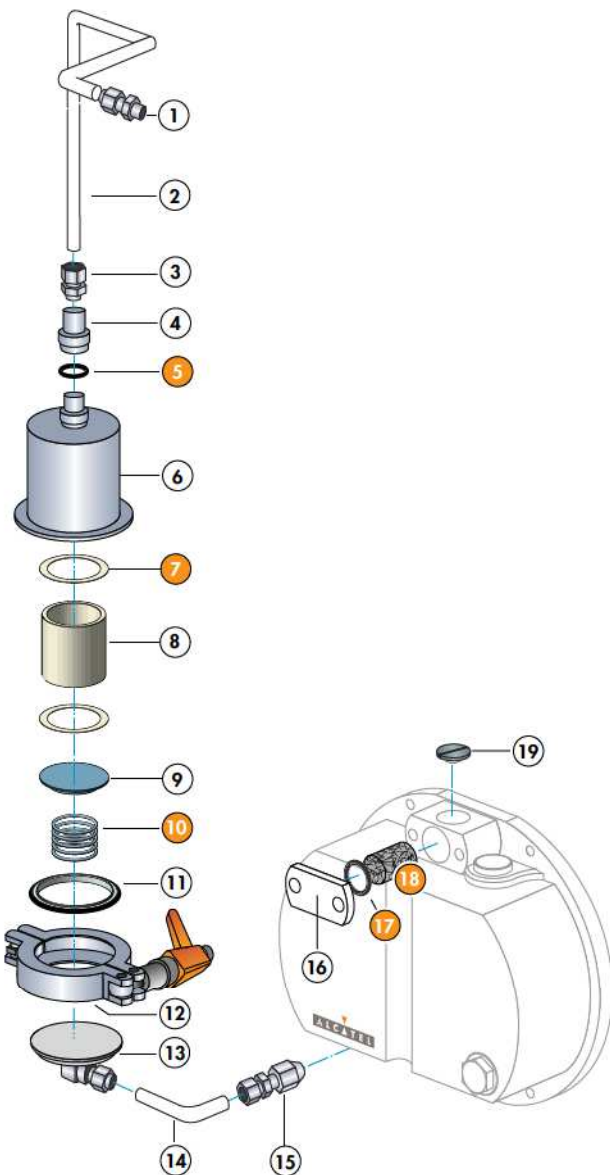


Rep.	Description	Qty*	P/N
1	Screw CHc M 6 x 10	1/4	
2	Onduflex washer M 6	1/4	Maint. kit
3	Cover	1/1	060116
4	O-Ring 3 x Ø80	1/1	Maint. kit
5	By-pass stop valve	1/1	060114
6	Block	1/1	Maint. kit
7	Spring	1/1	Maint. kit
8	Setting screw	1/1	060117
9	O-Ring 5.33xØ56.52	1/1	Maint. kit

* Quantity / Total Quantity

Roots 602 L - Casing pumping kit

A Pumping kit components



Rep.	Description	Qty*	P/N
1	Union connector	1/3	081416
2	Upper tube	1/1	A328851
3	Idem 1	1/3	-
4	M 12 - 1/8 RP connector	1/1	A459346
5	O-Ring 2,7 x Ø 13,6	1/1	Maint. kit
6	Equipped body	1/1	061816
7	Flat seal	1/2	Maint. kit
8	Filter cartridge	1/1	Maint. kit
9	Stop valve	1/1	061820
10	Spring	1/1	Maint. kit
11	Centering ring DN 40 O-Ring 5.33 x Ø 40.64	1/1 1/1	068226 Maint. kit
12	Clamping ring DN 40	1/1	090579
13	Blank-off flange DN 40	1/1	100936
14	Lower tube	1/1	A328852
15	Idem 1	1/3	-
16	Cover Onduflex washer M 5 Screw CHc M 5 x 12	1/1 2/2 2/2	061817 Maint. kit-
17	O-Ring 3 x Ø 24	1/1	Maint. kit
18	Stainless steel wool (10 gr)	1/1	Maint. kit
19	Plug M 12 x 8	1/1	051925

* Quantity / Total Quantity