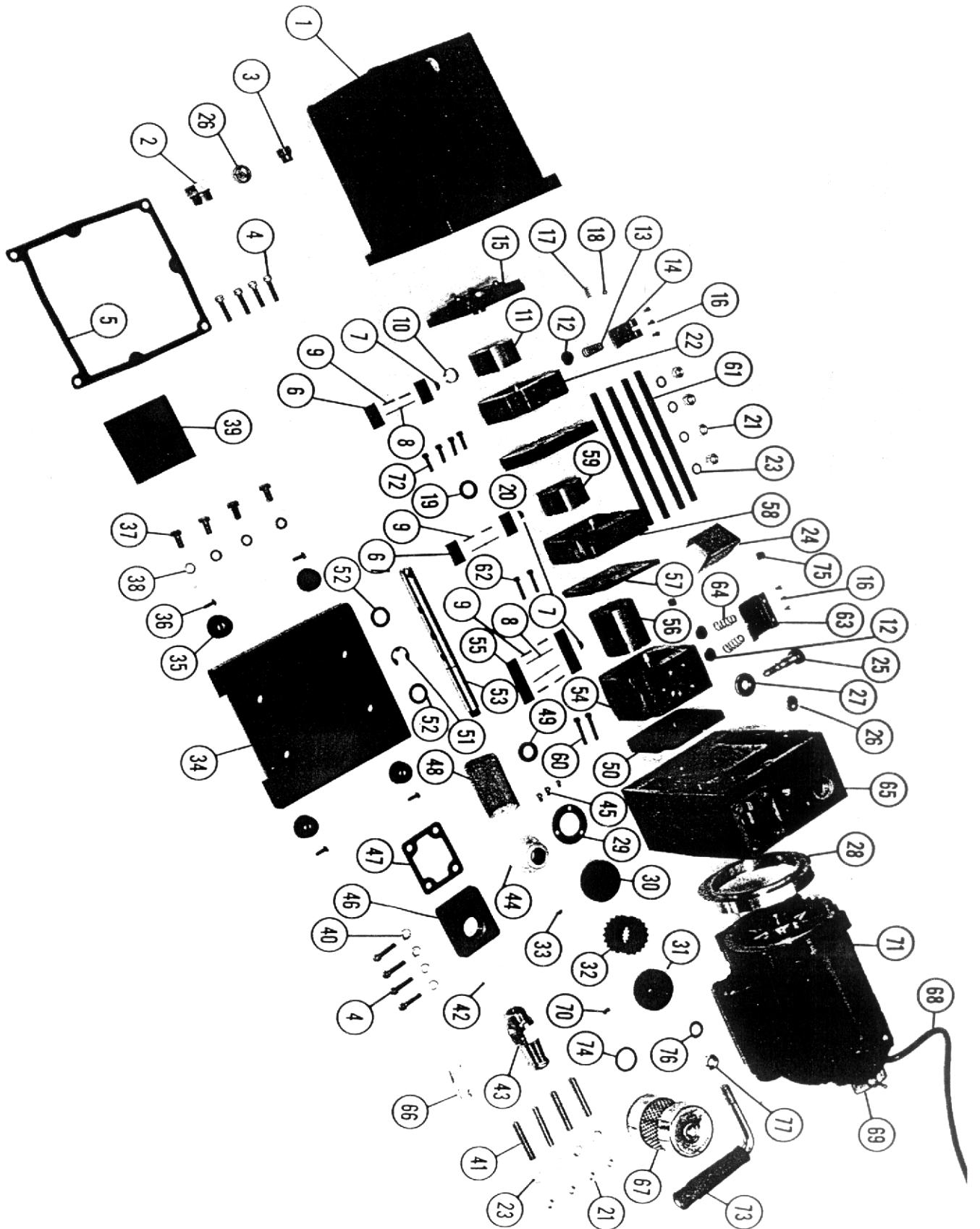


8816



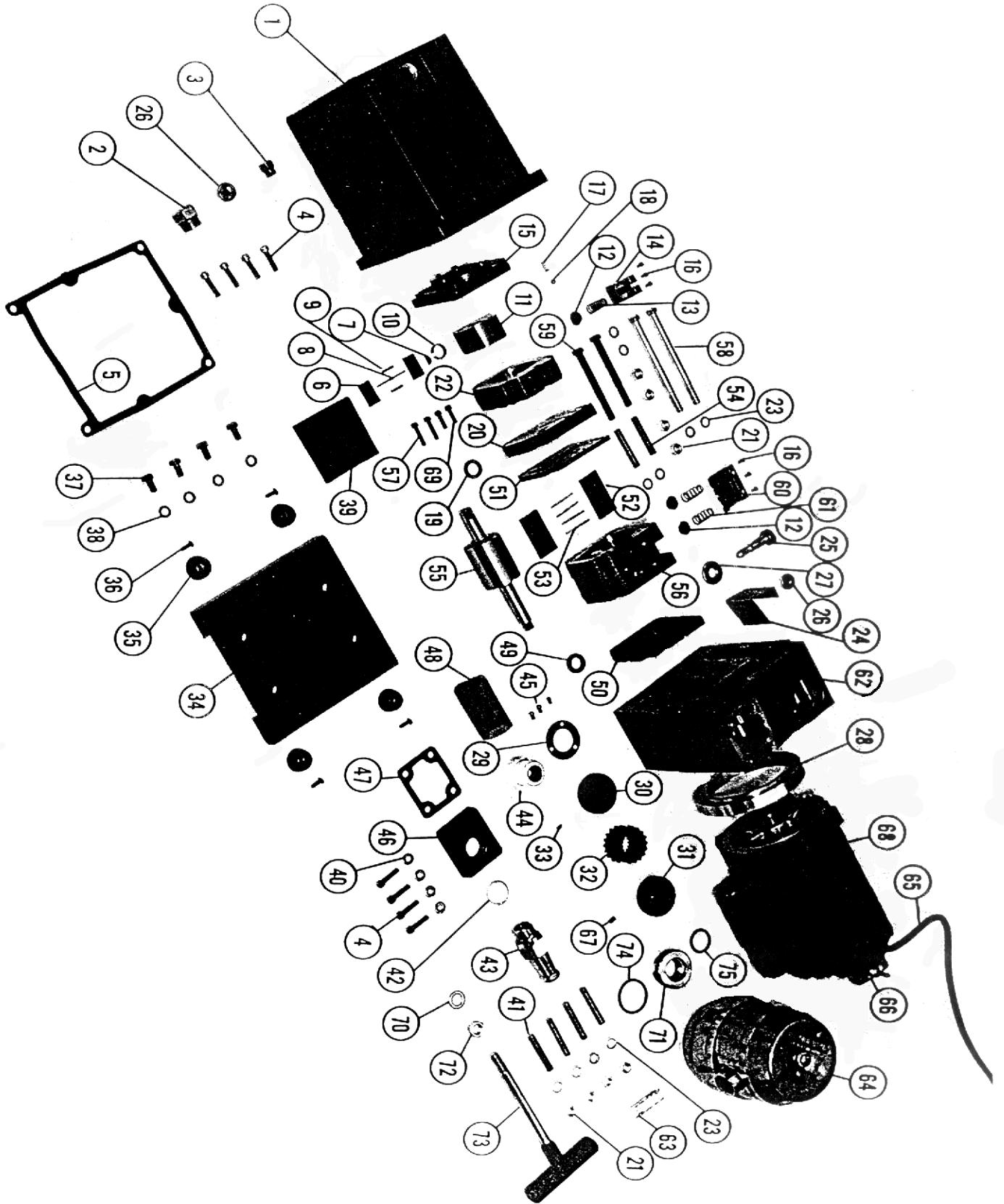
## PARTS LIST

## DIRECTOR II VACUUM PUMP

CAT. NO. 8816

Item	Qty.	Pc. No.	Description
1	1	41-3042	Oil Case Assembly
2	1	41-3035	Oil Filler Plug With "O" Ring
3	1	41-2933	Drain Plug (Use with "O" Ring 41-2642)
4	8	2-01-6116	Socket Head Stl. Screw 1/4-20 x 1
5	1	41-3133	Oil Case Gasket
6	4	41-2709	Small Vane
7	3	41-0613	Woodruff Key #404
8	4	41-2969	Vane Spring Holder
9	8	41-2972	Vane Spring
10	1	41-3061	Tolerance Ring
11	1	41-2964	Exhaust Rotor
12	3	41-3048	Valve
13	1	41-2783	Valve Spring
14	1	41-2966	Exhaust Valve Bracket
15	1	41-3059	Oil Pump Assembly
16	6	2-00-2604	Fil. Hd. Stl. Screw 8-32 x 1/4
17	1	41-2951	Check Valve Spring
18	1	4-40-0800	Steel Ball 1/4 Dia.
19	1	41-2977	Lip Seal (Center Plate)
20	1	41-2961	Center Plate
21	8	2-31-2521	Stl. Hex Nut 3/8-16
22	1	41-2778	Exhaust Ring
23	8	2-61-0571	Steel Washer 3/8 x 5/8 x .071
24	1	41-2989	Splash Baffle
25	1	41-1736	Vented Exhaust Valve
26	1	41-3040	Oil Level Window
27	1	41-2757	Locknut
28	1	41-3070	Motor Adaptor
29	1	41-0643	Seal Gasket
30	1	41-3071	Coupling Flange 1/2 Bore
31	1	41-3072	Coupling Flange 5/8 Bore
32	1	41-3073	Coupling Sleeve
33	1	41-2732	Coupling Key
34	1	41-2724	Base Including Item 35 and Item 36
35	1	41-0929	Rubber Bumper
36	4	2-02-5708	Rd. Hd. Self Tapping Screw, Type F, 10-32 x 1/2
37	4	2-01-0310	Hex. Hd. Stl. Cap Screw 5/16-18 x 5/8
38	4	2-63-0356	Split Lockwaster 5/16
39	1	41-3050	Drip Pad
40	4	2-61-0000	Steel Washer 3/16
41	4	41-3069	Motor Stud
42	1	41-0491	Aluminum Washer
43	1	41-0993	Intake Nipple
44	1	41-2068	Shaft Seal
45	3	2-00-2705	Fil. Hd. Stl. Screw 10-32 x 5/16
46	1	41-2743	Intake Cover
47	1	41-2744	Intake Cover Gasket
48	1	41-2745	Intake Screen
49	1	41-2988	Lip Seal (Wear Plate)
50	1	41-2797	Wear Plate
51	1	41-1150	Truarc Ring
52	2	41-1285	Thrust Washer
53	1	41-2953	Shaft
54	1	41-3097	Intake Ring
55	2	41-2708	Intake Vane
56	1	41-2706	Intake Rotor
57	1	41-2734	Separator Plate
58	1	41-3093	Small Intake Ring
59	1	41-2748	Small Intake Rotor
60	2	2-00-6720	Socket Head Screw 10-32 x 1-1/4
61	4	41-2751	Pump Stud
62	2	2-00-6716	Socket Head Screw 10-32 x 1
63	1	41-2968	Bypass Bracket
64	2	41-2991	Intake Valve Spring
65	1	41-3095	Mounting Plate
66	1	1-99-5282	Sealant (6cc Tube)
67	1	1417P	Exhaust Filter
68	1	41-2753	Cord Set For 115V Operation
68	1	41-2754	Cord Set For 230V Operation
69	1	41-2752	Motor Switch
70	1	41-2637	Motor Shaft Key 3/16 x 3/16 x 3/8
71	1	41-2001	Motor, 1/2 HP, 115V, 60Hz Includes Items 68, 69 & 70
71	1	41-2003	Motor, 1/2 HP, 230V, 60Hz Includes Items 68, 69 & 70
71	1	41-2005	Motor, 1/2 HP, 110V, 50Hz Includes Items 68, 69 & 70
71	1	41-2007	Motor, 1/2 HP, 220V, 50Hz Includes Items 68, 69 & 70
72	4	2-00-6712	Socket Head Screw 10-32 x 3/4
73	1	41-3067	Handle Assembly
74	1	41-2065	"O" Ring 7/8 I.D. x 1/8
75	2	41-3096	Threaded Insert
76	1	2-69-7015	Washer 9/16 x 7/8 x 1/16
77	1	2-31-9000	Hex Nut 1/2-13

8821



PARTS LIST  
DIRECTOR II VACUUM PUMP

CAT. NO. 8821

Item	Qty.	Pc. No.	Description
1	1	41-3042	Oil Case Assembly Includes (1) Item 26
2	1	41-3035	Oil Filler Plug With "O" Ring
3	1	41-2933	Drain Plug (Use with "O" Ring 41-2642)
4	8	2-01-6116	Socket Head Stl. screw 1/4-20 x 1
5	1	41-3133	Oil Case Gasket
6	2	41-2709	Small Vane
7	1	41-0613	Woodruff Key #404
8	1	41-2969	Vane Spring Holder
9	2	41-2972	Vane Spring
10	1	41-3061	Tolerance Ring
11	1	41-2964	Exhaust Rotor
12	3	41-3048	Valve
13	1	41-2783	Valve Spring
14	1	41-2966	Exhaust Valve Bracket
15	1	41-3059	Oil Pump Assembly
16	6	2-00-2604	Fil. Hd. Stl. Screw 8-32 x 1/4
17	1	41-2951	Check Valve Spring
18	1	4-40-0800	Steel Ball 1/4 Dia.
19	1	41-2977	Lip Seal (Center Plate)
20	1	41-2961	Center Plate
21	8	2-31-2521	Stl. Hex Nut 3/8-16
22	1	41-2778	Exhaust Ring
23	10	2-61-0571	Steel Washer 3/8 x 5/8 x .071
24	1	41-2989	Splash Baffle
25	1	41-1736	Vented Exhaust Valve
26	1	41-3040	Oil Level Window
27	1	41-2757	Locknut
28	1	41-3070	Motor Adaptor
29	1	41-0643	Seal Gasket
30	1	41-3071	Coupling Flange 1/2 Bore
31	1	41-3072	Coupling Flange 5/8 Bore
32	1	41-3073	Coupling Sleeve
33	1	41-2732	Coupling Key
34	1	41-2724	Base Including Item 35 and Item 36
35	4	41-0929	Rubber Bumper
36	4	2-02-5708	Rd. Hd. Self Tapping Screw, Type F, 10-32 x 1/2
37	4	2-01-0310	Hex. Hd. Stl. Cap Screw 5/16-18 x 5/8
38	4	2-63-0356	Split Lockwasher 5/16
39	1	41-3050	Drip Pad
40	4	2-61-0000	Steel Washer 3/16
41	4	41-3069	Motor Stud
42	1	41-0491	Aluminum Washer
43	1	41-0993	Intake Nipple
44	1	41-2068	Shaft Seal
45	3	2-00-2705	Fil. Hd. Stl. Screw 10-32 x 5/16
46	1	41-2743	Intake Cover
47	1	41-2744	Intake Cover Gasket
48	1	41-2745	Intake Screen
49	1	41-2988	Lip Seal (Wear Plate)
50	1	41-2994	Wear Plate
51	1	41-2734	Separator Plate
52	2	41-2995	Intake Vane
53	4	41-2996	Intake Vane Spring
54	2	2-01-9532	Soc. Stl. Set Screw 3/8-16 x 2
55	1	41-2993	Rotor & Shaft Assembly
56	1	41-2992	Intake Ring
57	2	2-00-6716	Soc. Hd. Stl. Screw, 10-32 x 1
58	2	2-01-0588	Hex. Hd. Stl. Bolt 3/8-16 x 5-1/2
59	2	2-01-0560	Hex. Hd. Stl. Bolt 3/8-16 x 3-3/4
60	1	41-2968	Bypass Valve Bracket
61	2	41-2991	Bypass Valve Spring
62	1	41-2760	Mounting Plate
63	1	1-99-5282	Sealant (6cc Tube)
64	1	1417S	Exhaust Filter W/Adaptor, includes Items 71, 74 & 75
65	1	41-2753	Cord Set for 115V Operation
65	1	41-2754	Cord Set For 230V Operation
66	1	41-2752	Motor Switch
67	1	41-2637	Motor Shaft Key 3/16 x 3/16 x 3/8
68	1	41-2001	Motor, 1/2 HP, 115V, 60Hz Includes Items 65, 66 & 67
68	1	41-2003	Motor, 1/2 HP, 230V, 60Hz Includes Items 65, 66 & 67
68	1	41-2005	Motor, 1/2 HP, 110V 50Hz Includes Items 65, 66 & 67
68	1	41-2007	Motor, 1/2 HP, 220V, 50Hz Includes Items 65, 66 & 67
69	2	2-00-6712	Soc. Hd. Steel Screw, 10-32 x 3/4
70	1	2-69-7015	Stainless Steel Washer 9/16 x 7/8 x 1/16
71	1	41-2787	Exhaust Filter Adapter
72	1	2-31-9000	Steel Hex. Jam Nut
73	1	41-2786	Handle Assembly
74	1	41-3727	"O" Ring, 1-5/8 I.D. x 1/8
75	1	41-2065	"O" Ring, 7/8 x 1/8